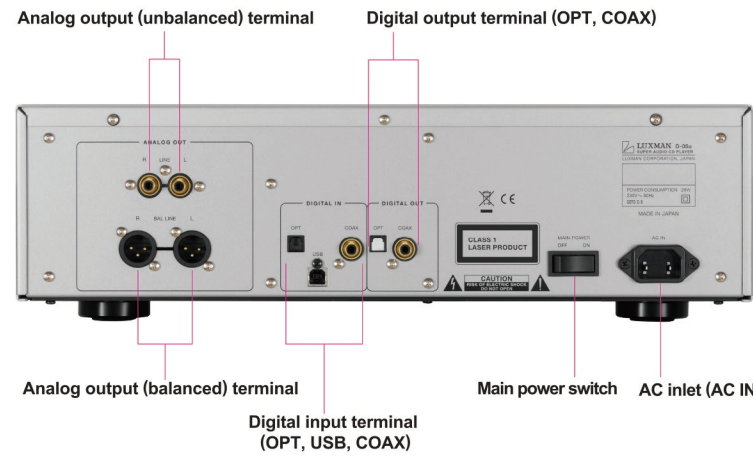
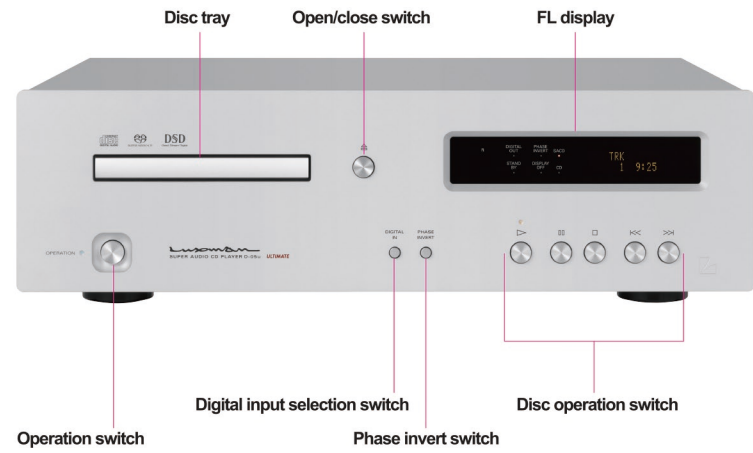


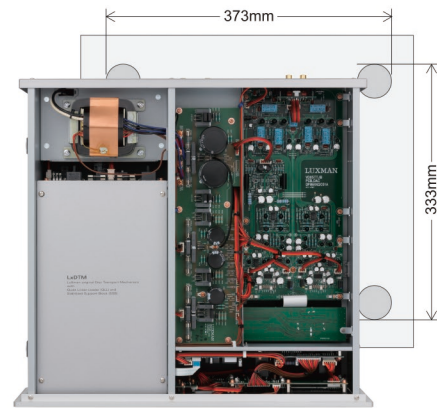
# D-05u SUPER AUDIO CD PLAYER



Remote control (RD-21)

## SPECIFICATIONS

Applicable disc	2-channel SACD, CD
Supported sampling frequencies	USB input (PCM) : 32k, 44.1k, 48k, 88.2k, 96k, 176.4k, 192k, 352.8k, 384kHz (16, 24, 32bits) USB input (DSD) : 2.82M, 5.64MHz (1bit) COAX/OPT input : 32k, 44.1k, 48k, 88.2k, 96k, 176.4k, 192kHz (16, 20, 24bits)
Analog output voltage / impedance	2.4V/300Ω (unbalanced), 600Ω (balanced)
Frequency response	CD 5Hz to 20kHz (+0, -0.5dB) SACD 5Hz to 50kHz (+0, -3.0dB) USB 5Hz to 50kHz (+0, -3.0dB)
Total harmonic distortion	CD 0.0015%, SACD 0.0015%, USB 0.0009%
S/N ratio (IHF-A)	CD 122dB, SACD 102dB, USB 123dB
Disc drive mechanism	LxDTM
D/A converter	Burr-Brown-made PCM1795 (monaural mode) x 2
Output amplifier circuit	Fully balanced/high sound quality IC buffer
Power supply	230V~(50Hz) / 115V~(60Hz)
Power consumption	26W 1W (at standby)
Dimensions	440(W) x 133(H) x 410(D) mm front side knob of 2mm and rear side terminal of 8mm included in depth
Net weight	14.8kg(main unit)
Accessories	Remote control (RD-21) Power cable Install software CD



Internal configuration

\*Rear panel : European Model

## Following in the wake of the top-end model

### SUPER AUDIO CD PLAYER D-06u



#### SPECIFICATIONS

Applicable disc	2-channel SACD, CD
Supported sampling frequencies	USB input (PCM) : 32k, 44.1k, 48k, 88.2k, 96k, 176.4k, 192k, 352.8k, 384kHz (16, 24, 32bits) USB input (DSD) : 2.82M, 5.64MHz (1bit) COAX/OPT input : 32k, 44.1k, 48k, 88.2k, 96k, 176.4k, 192kHz (16, 20, 24bits)
Analog output voltage / impedance	2.5V/300Ω (unbalanced), 600Ω (balanced)
Frequency response	CD 5Hz to 20kHz (+0, -0.5dB) SACD 5Hz to 50kHz (+0, -3.0dB) USB 5Hz to 50kHz (+0, -3.0dB)

Total harmonic distortion	CD 0.0015%, SACD 0.0011%, USB 0.0009%
S/N ratio (IHF-A)	CD 122dB, SACD 104dB, USB 123dB
Disc drive mechanism	LxDTM
D/A converter	Burr-Brown-made PCM1792A (monaural mode) x 2
Output amplifier circuit	Fully balanced/high sound quality IC buffer
Power supply	230V~(50Hz) / 115V~(60Hz)
Power consumption	29W 1W (at standby)
Dimensions	440(W) x 133(H) x 410(D) mm front side knob of 2mm and rear side terminal of 8mm included in depth
Net weight	15.7kg(main unit)

## Top-end disc player

### SUPER AUDIO CD PLAYER D-08u



#### SPECIFICATIONS

Applicable disc	2-channel SACD, CD
Supported sampling frequencies	USB input (PCM) : 32k, 44.1k, 48k, 88.2k, 96k, 176.4k, 192k, 352.8k, 384kHz (16, 24, 32bits) USB input (DSD) : 2.82M, 5.64MHz (1bit) COAX/OPT input : 32k, 44.1k, 48k, 88.2k, 96k, 176.4k, 192kHz (16, 20, 24bits)
Analog output voltage / impedance	2.5V/300Ω (unbalanced), 600Ω (balanced)
Frequency response	CD 5Hz to 20kHz (+0, -0.5dB) SACD 5Hz to 50kHz (+0, -3.0dB) USB 2Hz to 50kHz (+0, -3.0dB)

Total harmonic distortion	CD 0.0015%, SACD 0.0011%, USB 0.0009%
S/N ratio (IHF-A)	CD 123dB, SACD 106dB, USB 123dB
Disc drive mechanism	LxDTM(with dust-proof shutter)
D/A converter	Burr-Brown-made PCM1792A (monaural mode) x 2
Output amplifier circuit	Fully balanced discrete ODNF version 4.0
Power supply	230V~(50Hz) / 115V~(60Hz)
Power consumption	38W 1W (at standby)
Dimensions	440(W) x 154(H) x 413(D) mm front side knob of 2mm and rear side terminal of 11mm included in depth
Net weight	22.5kg(main unit)

\* Windows is a registered trademark or a trademark of Microsoft Corporation in the United States and/or other countries.  
\* Mac is a registered trademark or a trademark of Apple Inc. in the U.S. and other countries. \* DSD is a registered trademark.  
\* The described company names and product names are trademarks or registered trademarks of each company.  
\* Specifications and appearance are subject to change without notice \* The products listed in this catalog do not include line cables. Please purchase cables separately.

# LUXMAN

LUXMAN CORPORATION, 1-3-1 Shinyokohama, Kouhoku-ku, Yokohama-shi, Kanagawa 222-0033, Japan  
Tel: +81-45-470-6980 Fax: +81-45-470-6997 www.luxman.co.jp  
LUXMAN reserves the right to alter the design and specifications without notice.  
All rights reserved LUXMAN CORPORATION

## Safety Cautions

To ensure correct use of this product, read the "Owner's Manual" prior to use. Failure to follow all safeguards can result in fire, electric shock, or other accidents.

# LUXMAN

## SUPER AUDIO CD PLAYER D-05u

